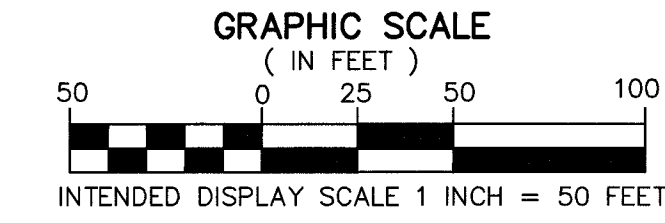
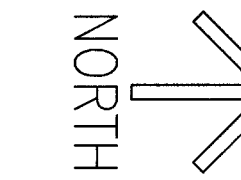


HANGAR AND AIRFIELD BUSINESS PARK MUPD

A PORTION OF SECTION 29, TOWNSHIP 43 SOUTH, RANGE 43 EAST,
PALM BEACH COUNTY, FLORIDA.

THIS INSTRUMENT PREPARED BY
DAVID P. LINDLEY
OF

CAULFIELD & WHEELER, INC.
SURVEYORS - ENGINEERS - PLANNERS
7900 GLADES ROAD, SUITE 100
BOCA RATON, FLORIDA 33434 - (561)392-1991



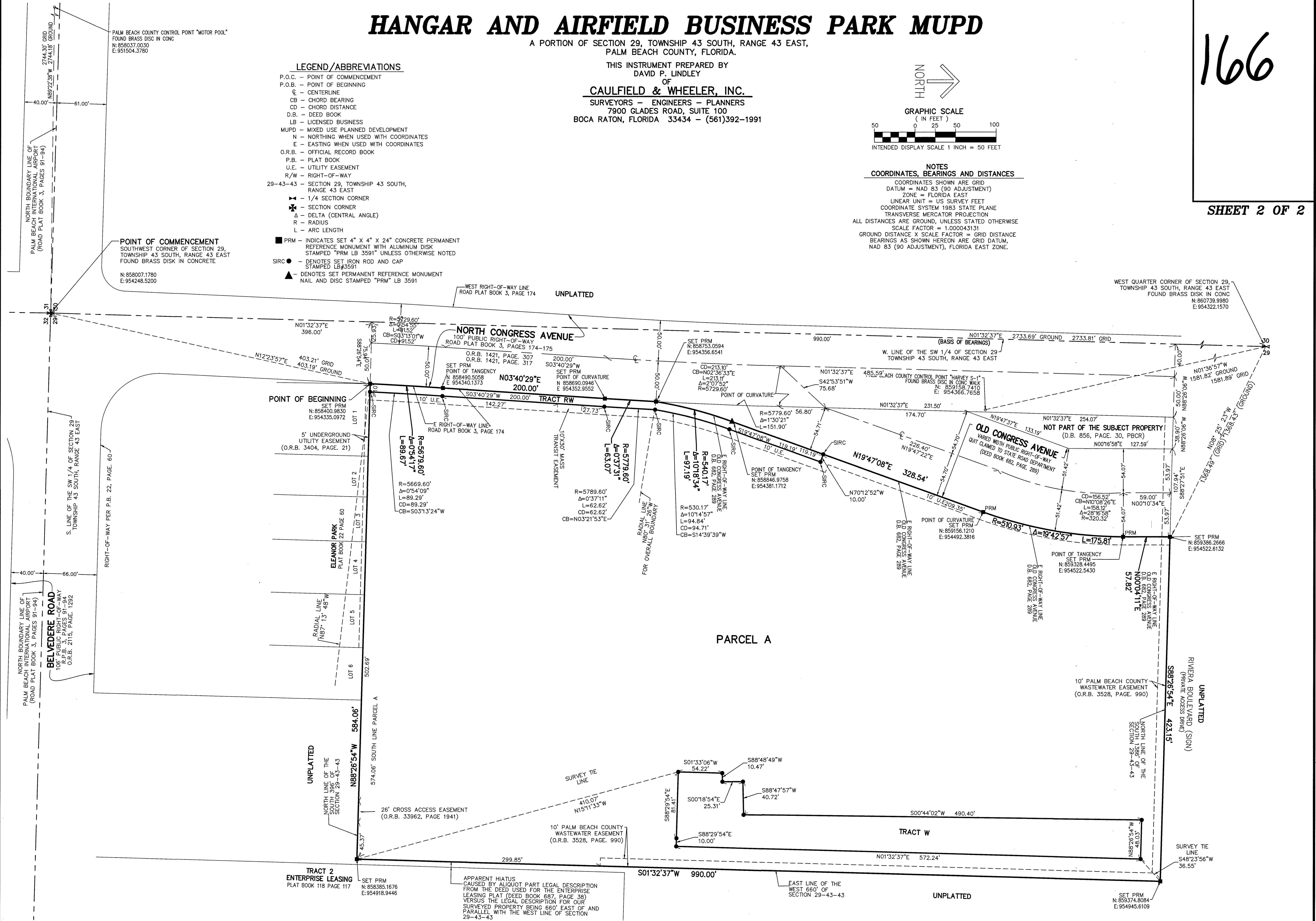
NOTES COORDINATES, BEARINGS AND DISTANCES

COORDINATES SHOWN ARE GRID
DATUM = NAD 83 (90 ADJUSTMENT)
ZONE = FLORIDA EAST
LINEAR UNIT = US SURVEY FEET
COORDINATE SYSTEM 1983 STATE PLANE
TRANSVERSE MERCATOR PROJECTION
ALL DISTANCES ARE GROUND, UNLESS STATED OTHERWISE
SCALE FACTOR = 1.000043131
GROUND DISTANCE X SCALE FACTOR = GRID DISTANCE
BEARINGS AS SHOWN HEREON ARE GRID DATUM,
NAD 83 (90 ADJUSTMENT), FLORIDA EAST ZONE.

LEGEND/ABBREVIATIONS

- P.O.C. - POINT OF COMMENCEMENT
- P.O.B. - POINT OF BEGINNING
- CL - CENTERLINE
- CB - CHORD BEARING
- CD - CHORD DISTANCE
- D.B. - DEED BOOK
- LB - LICENSED BUSINESS
- MUPD - MIXED USE PLANNED DEVELOPMENT
- N - NORTHING WHEN USED WITH COORDINATES
- E - EASTING WHEN USED WITH COORDINATES
- O.R.B. - OFFICIAL RECORD BOOK
- P.B. - PLAT BOOK
- U.E. - UTILITY EASEMENT
- R/W - RIGHT-OF-WAY
- 29-43-43 - SECTION 29, TOWNSHIP 43 SOUTH, RANGE 43 EAST
- 1/4 - 1/4 SECTION CORNER
- SC - SECTION CORNER
- Δ - DELTA (CENTRAL ANGLE)
- R - RADIUS
- L - ARC LENGTH
- PRM - INDICATES SET 4" X 4" X 24" CONCRETE PERMANENT REFERENCE MONUMENT WITH ALUMINUM DISK STAMPED "PRM LB 3591" UNLESS OTHERWISE NOTED
- SIRC - DENOTES SET IRON ROD AND CAP STAMPED LB#3591
- ▲ - DENOTES SET PERMANENT REFERENCE MONUMENT NAIL AND DISC STAMPED "PRM" LB 3591

POINT OF COMMENCEMENT
SOUTHWEST CORNER OF SECTION 29,
TOWNSHIP 43 SOUTH, RANGE 43 EAST
FOUND BRASS DISK IN CONCRETE
N: 858007.1780
E: 954248.5200



POINT OF BEGINNING
SET PRM
N: 858400.9830
E: 954335.0972

PARCEL A

TRACT W

TRACT 2
ENTERPRISE LEASING
PLAT BOOK 118 PAGE 117
SET PRM
N: 858385.1676
E: 954918.9446

APPARENT HIATUS
CAUSED BY ALIQUOT PART LEGAL DESCRIPTION
FROM THE DEED USED FOR THE ENTERPRISE
LEASING PLAT (DEED BOOK 687, PAGE 38)
VERSUS THE LEGAL DESCRIPTION FOR OUR
SURVEYED PROPERTY BEING 660' EAST OF AND
PARALLEL WITH THE WEST LINE OF SECTION
29-43-43

SET PRM
N: 859374.8084
E: 954945.6109